

MMTFB Suction Series



Technical specification

Application:	Suction filter
Port size:	G1 1/4 connection
Flow rate:	max. 70 l/min
Temperature range:	-10 °C to 100 °C
Compatibility:	Suitable for mineral oils, lubrication oils, non-flam fluids, synthetic and rapidly biodegradable oils according to ISO2943 (for use with water, please contact our technical dept.)
Tested according to ISO standards:	ISO2941 Collapse/burst resistance ISO2942 Fabrication integrity ISO2943 Material compatibility integrity ISO3723 Method for end load test ISO3724 Flow fatigue characteristics ISO3968 Pressure drop vs. Flow ISO16889 Multi-pass (filtration performance)

Technical specification subject to change without prior notice. Other specification on request. 2013/07/23

FILTER SELECTOR

Select your filter requirements here.

MMFTF

01

BH

70

10

Filter element

MMTFB

Suction Filter

Function symbol

BH: Water Glycol
Omit if use hydraulic oil

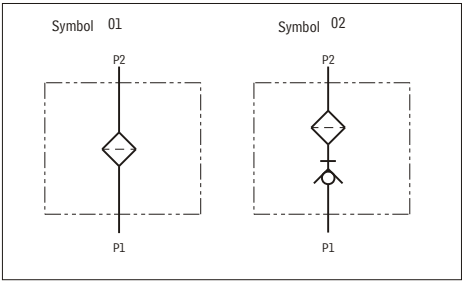
Flow rate (45,70 l/min)

Filtration rating (10, 20, 30, 80µ)

Unsure? Contact us.

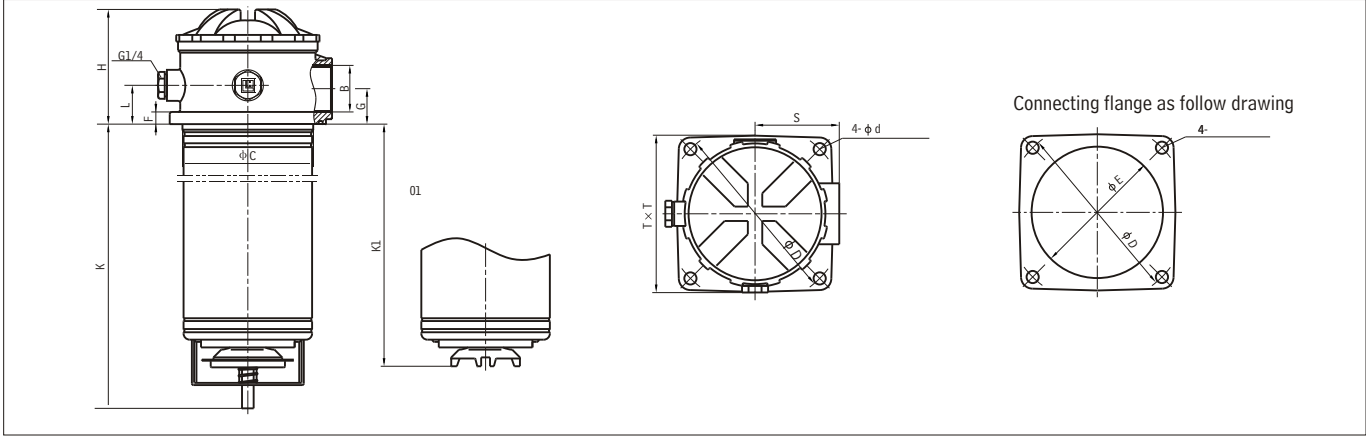
Technical data

Model	Flow rate (l/min)	Filtr. (µm)	Connection	Initial Δ P (MPa)	Model of element
TFB-45*	45	10 20	G1 1/4	< 0.01	TFBX-45*
TFB-70*	70	30 80			TFBX-70*



Technical specification subject to change without prior notice. Other specification on request. 2013/07/23

Mounting Size



Model	B	C	D	d	min. E max.	F	G	H	K	K1	L	M	S	T
TFB -45	G1 1/4	110	165	11	111/121	11	32	104	257	219	35	M10	76	141
TFB -70		118			119/121				357	319				

Technical specification subject to change without prior notice. Other specification on request. 2013/07/23

Notes

This image shows a blank sheet of white paper with horizontal ruling lines. The lines are evenly spaced and extend across the width of the page. There are no margins, text, or other markings on the paper.

Technical specification subject to change without prior notice. Other specification on request. 2013/07/23