



DESCRIPTION

Offline cleaning units can be used to filter excessive amounts of impurities in hydraulic tanks or to filter and disperse oil into a new tank. They maintain fluid cleanliness and therefore ensure stable operation and prolong service life of the system in use.

There are a variety of offline cleaning units, differing in power, weight, size, pressure class, filtration accuracy and flow rate.

Special versions are available upon request; please consult our team of specialist.



TECHNICAL DETAILS

Flows to 100 LPM

Micron ratings up to 30 μ

FEATURES

Prolongs service life of parts

Ensures stable operation



MMGLS PORTABLE FILTER EQUIPMENT

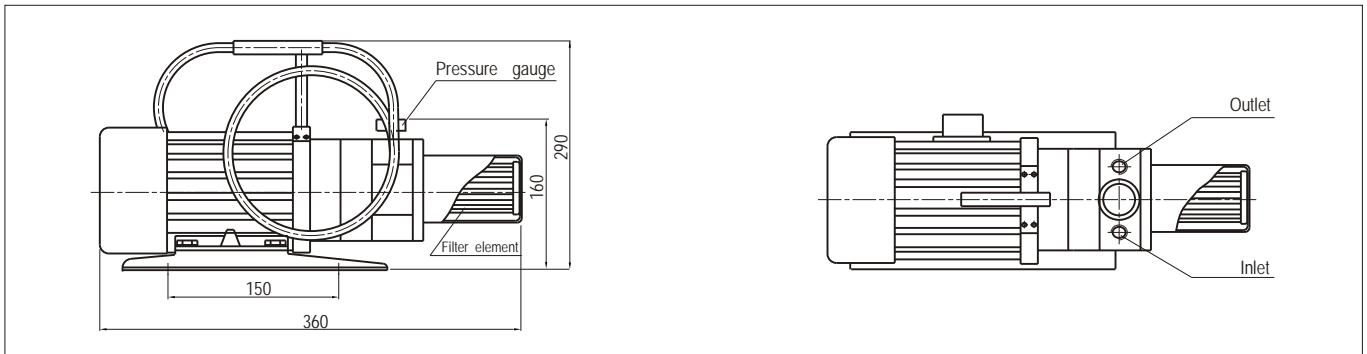
The MMGLS filtration fitting is a new type of filtration equipment with advanced technology. It can be used to filtrate oil with a low viscosity. Also, it can be used for injection filtration and to maintain the fluid cleanliness hydraulic and lubrication fluid systems. Additionally, it can also be installed in a system as by-pass filter.



TECHNICAL DATA

Model	Weight	Flow (L/min)	Filtration (µm)	Pressure (MPa)	Power Supply	Power
MMGLS	10.4 kg	10	10 20 30	0.5	AC 220V	180W

MOUNTING SIZE



FILTER SELECTOR

Select your filter requirements here.

e.g: GLS BH 20 - 10

Portable filtration fitting

BH: Water glycol
Omit if use hydraulic oil

Filtration accuracy (10, 20 or 30µ)

Flow rate (10 L/min)

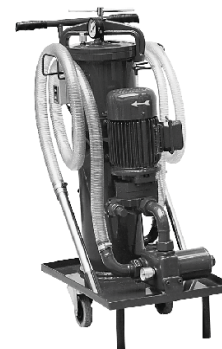


OTHER FILTER TYPES

OFFLINE CLEANING UNITS

MM-LUC, LUCA, LUCB PUSH CART FILTERS

The LUC, LUCA & LUCB are pushcart filters, which can be used to filtrate newly added oil and/or maintain hydraulic fluid cleanliness. These pushcart filters have a compact structure and are very user friendly. Also, they have a high accuracy and low noise levels. These pushcart filters will only remove the impurities in the oil, and not the additives. There are spare parts available for each pushcart filter.



TECHNICAL DATA

Model	Flow (L/min)	Rough Filtration (μm)	Fine Filtration (μm)	Initial ΔP (MPa)	Attraction of magnet (N)	Power of motor (Kw)	Voltage (V)	Weight (kg)
MMLUC-16 × * #	16	100	3	< 0.02	2	0.37	AC:380	60
MMLUC-40 × * #	40					0.75		90
MMLUC-63 × * #	63					1.1		100
MMLUC-100 × * #	100					1.5		110
MMLUC _B ^A -16 × * #	16		20			0.37		
MMLUC _B ^A -40 × * #	40					0.75		
MMLUC _B ^A -63 × * #	63					1.1		
MMLUC _B ^A -100 × * #	100					1.5		

FILTER SELECTOR

Select your filter requirements here.

e.g: LUC BH Q 20 100

LUC: Fine pushcart filter
 LUCA: 5 class fine pushcart filter
 LUCB: With jerrican fine pushcart filter

BH: Water - glycol
 Omit if use hydraulic oil

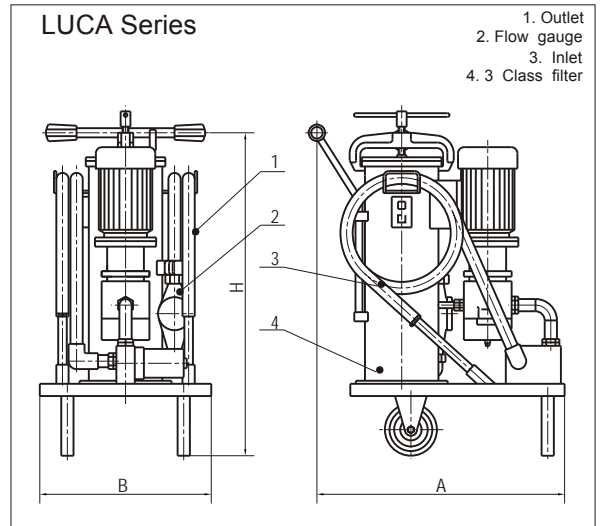
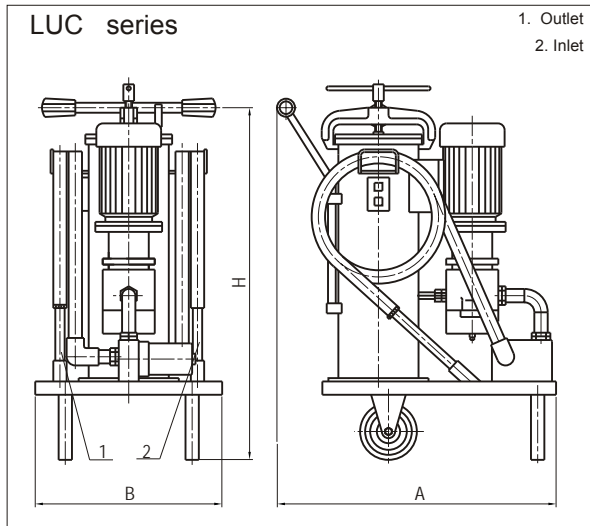
Omit if use filter media is paper
 Q: Filter media is fibre
 W: Filter media is mesh

Filtration accuracy (3, 5, 10, 20 or 30μ)

Flow rate (16, 40, 63, 100 l/min)

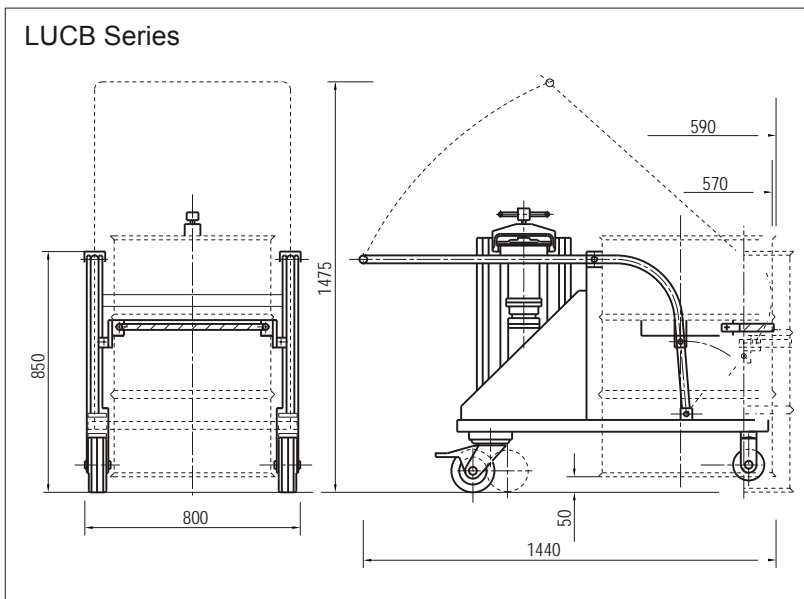


MOUNTING SIZE



Model	Size (mm)		
	H	A	B
MMLUC-16 ×*	920	470	350
MMLUC-40 ×*	930	648	400
MMLUC-63 ×*	960	560	400
MMLUC-100 ×*	960	560	400

Model	Size (mm)		
	H	A	B
MMLUCA-16 ×*	1060	650	450
MMLUCA-40 ×*	1080	700	500
MMLUCA-63 ×*	1120	740	500
MMLUCA-100 ×*	1120	740	500





OTHER FILTER TYPES

OFFLINE CLEANING UNITS

MMLUCD PORTABLE FILTER EQUIPMENT

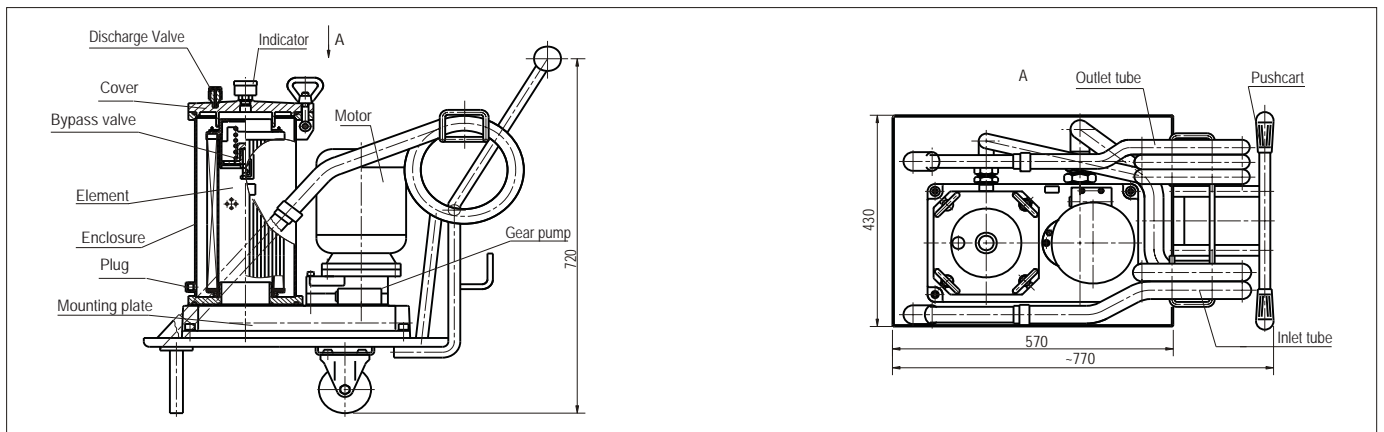
The MMLUCD is a pushcart filter with the performance and features of a TUC filtration device, which can be used in different kinds of oil pressure systems to filtrate newly input oil and to maintain hydraulic fluid cleanliness. It will only remove the impurities in the oil, and not the additives. There are spare parts available for each pushcart filter.



TECHNICAL DATA

Model	Flow (L/min)	Filtr. (μ m)	Initial Δ P (MPa)	Power of motor (Kw)	Motor Voltage (V)	Model of Element
MMLUCD-40 \times *	40	3	< 0.02	0.75	AC:380	MM1300R*BN/HC
MMLUCD-63 \times *	63	5		1.1		
MMLUCD-100 \times *	100	10		1.5		
		20				

MOUNTING SIZE



FILTER SELECTOR

Select your filter requirements here.

LUCD BH - 10 63

Fine pushcart filter _____

BH: Water-glycol
Omit if use hydraulic oil _____

Filtration accuracy (3, 5, 10 Or 20 μ) _____

Flow rate (40, 63 or 100 l/min) _____