

## MMFRC Series



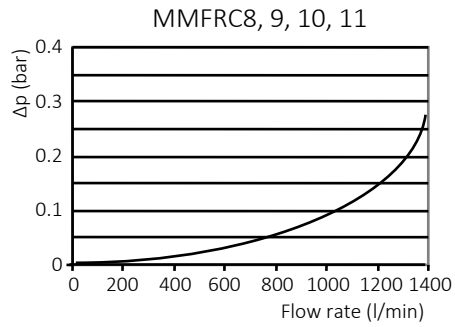
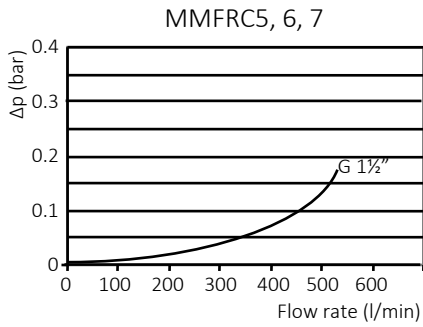
### Technical specification

Application:	Tank-top return filter
Ports:	G ¾", G 2½", SAE DN40 & SAE DN65 3000 psi max.
Flow rate:	1000 l/min
Working pressure:	max. 10 bar
Burst pressure:	min. 30 bar
Element collapse pressure:	10 bar
By-pass opening pressure:	$\Delta p$ 1.5 bar $\pm$ 0.2 bar
Seals:	Perbunan (NBR, -10°C to 100°C)
Material:	Aluminium head & cover, zinc plated steel diffuser
Compatibility:	Suitable for mineral oils, lubrication oils, non-flam fluids, synthetic and rapidly biodegradable oils according to ISO2943 (for use with water, please contact our technical dept.)
Tested according to ISO standards:	ISO2941 Collapse/burst resistance ISO2942 Fabrication integrity ISO2943 Material compatibility integrity ISO3723 Method for end load test ISO3724 Flow fatigue characteristics ISO3968 Pressure drop vs. Flow ISO16889 Multi-pass (filtration performance)

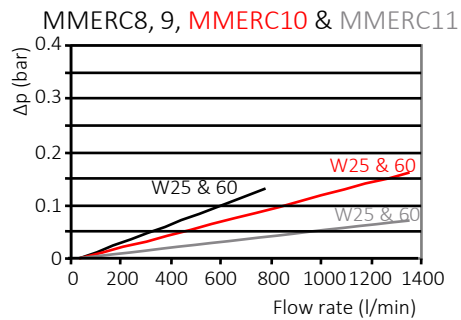
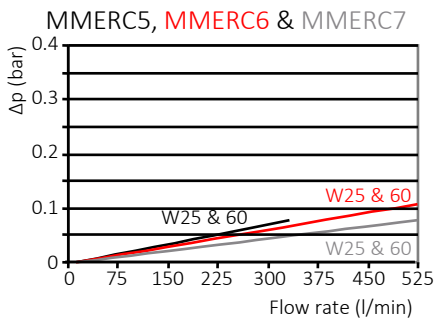
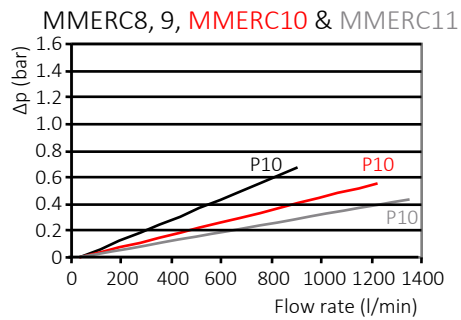
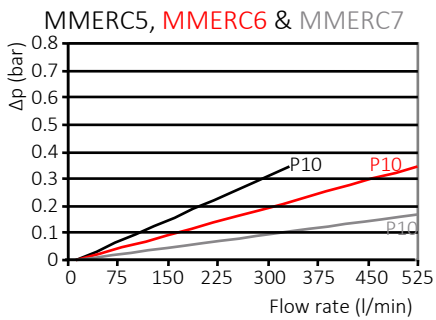
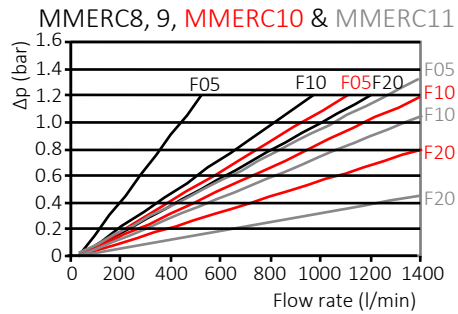
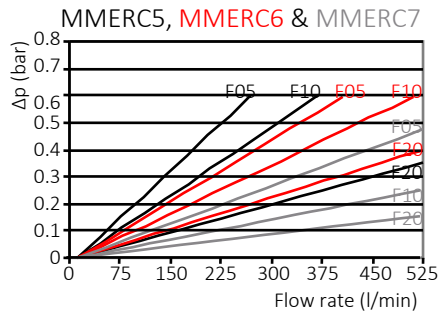
Technical specification subject to change without prior notice. Other specification on request 013/07/23

Pressure drop graphs ( $\Delta p$ )

Pressure drop of filter housing (mainly depending on port size)



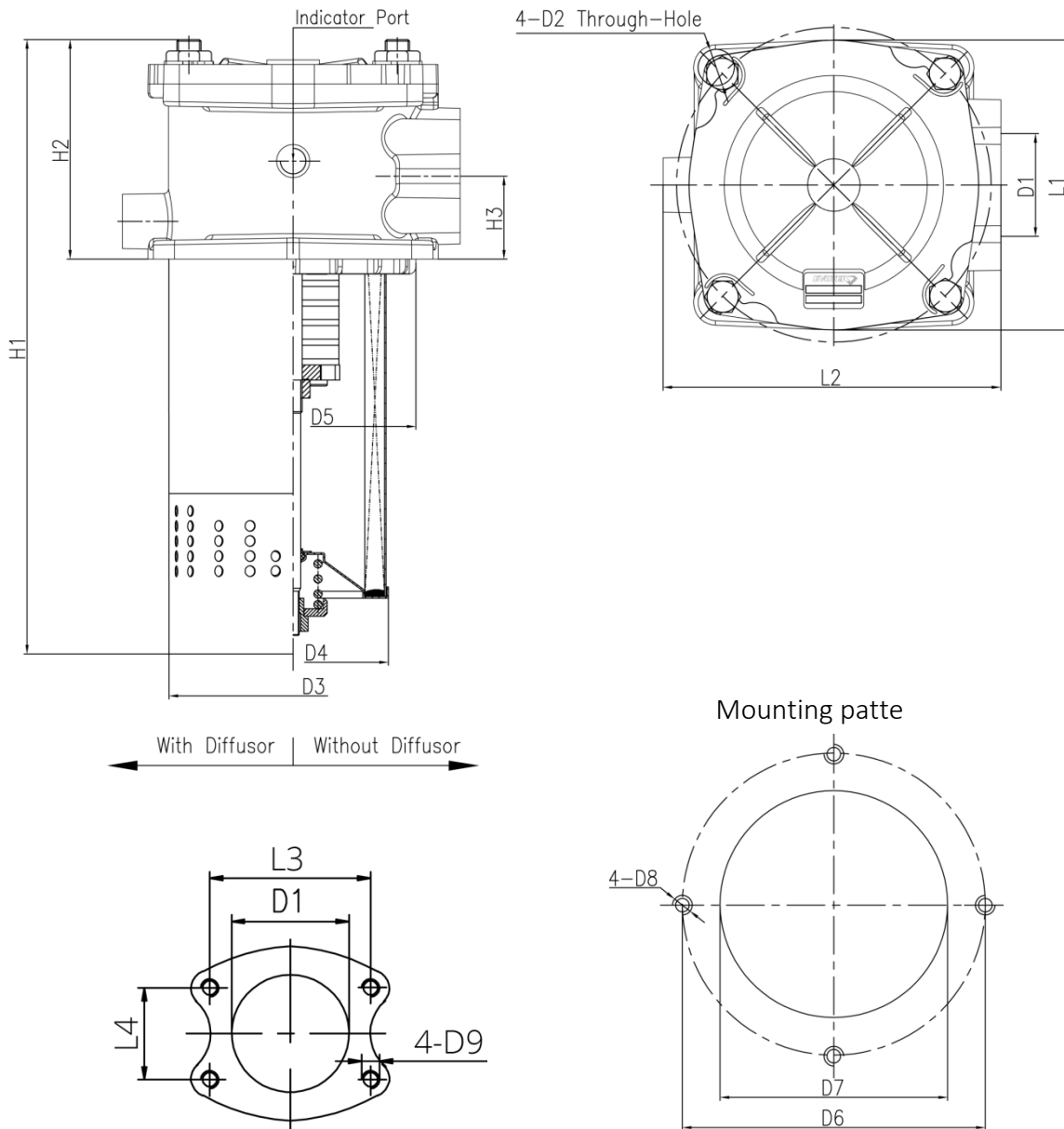
Pressure drop of clean filter elements (by filter media)



The test fluid has a density of 0.86 kg/dm<sup>3</sup> and a kinematic viscosity of 30 mm<sup>2</sup>/s.

Technical specification subject to change without prior notice. Other specification on request. 2013/07

## Dimensional drawings



Technical specification subject to change without prior notice. Other specification on request 013/07/23

Type	D1	D2	D3	D4	D5	D6	D7	D8	D9	H1	H2	H3	L1	L2	L3	L4
MMFRC5	1½"									379						
MMFRC6	SAE DN40 3000 psi	11	133	106	130	175	134	M10	M12	449	129	36	156	180	69.9	35.7
MMFRC7										654						
MMFRC8											445					
MMFRC9	2½"	13	165.5	126	162.5	215 to 220	167	M12	M12	525	155	55	193	223	88.9	50.8
MMFRC10										625						
MMFRC11										715						

### Order information

Filter assembly part number

	Housing					Element	Accessories		
	Type	Size	Connection	Seal	By-pass	Media	Gauge	Diffusor	Magnet
	MMFRC	Table 1	Table 2	Table 3	Table 4	Table 5	Table 6	Table 7	Table 8
Example	MMFRC	1	BB	B	05	- P10 -	R13	D	M

Element part number

	Element			
	Type	Size	Seal	Media
	MMERC	Table 1	Table 3	Table 5
Example	MMERC	1	B	P10

Tables

Table 1	
Size	Flow rate (l/min)
MMFRC5	250
MMFRC6	400
MMFRC7	450
MMFRC8	500
MMFRC9	650
MMFRC10	850
MMFRC11	1000

Table 2				Size
Connection				
BF	NF	FE	FG	
1 1/2" BSP	1 1/2" NPT	SAE DN40 3000 psi	SAE DN65 3000 psi	•
				•
•	•	•		MMFRC5
•	•	•		MMFRC6
•	•	•		MMFRC7
			•	MMFRC8
			•	MMFRC9
			•	MMFRC10
			•	MMFRC11

Table 3	
Seal	Material
B	Buna
V	Viton

Table 4	
By-pass	Open pressure
05	1.5 bar
X	Special

Table 5			
Media	Material	Filtration	Collapse
P10	Cellulose	10 µm	10 bar
F05	Fibreglass	5 µm	10 bar
F10	Fibreglass	10 µm	10 bar
F20	Fibreglass	20 µm	10 bar
W25	Wire mesh	25 µm	10 bar
W60	Wire mesh	60 µm	10 bar

Table 6		
Gauge	Pressure	Type
PA	0 – 10 bar	Axial gauge
R13	1.3 bar	Pressure switch
V13	1.3 bar	Visual indicator
E13	1.3 bar	Visual / electric

V13 & E13 for MMRC8, 9, 10 & 11 only

Table 7	
Diffusor	Type
D	With diffusor
0	Without diffusor

Table 8	
Magnet	Type
M	With magnet
0	Without magnet

Technical specification subject to change without prior notice. Other specification on request. 2013/07/23